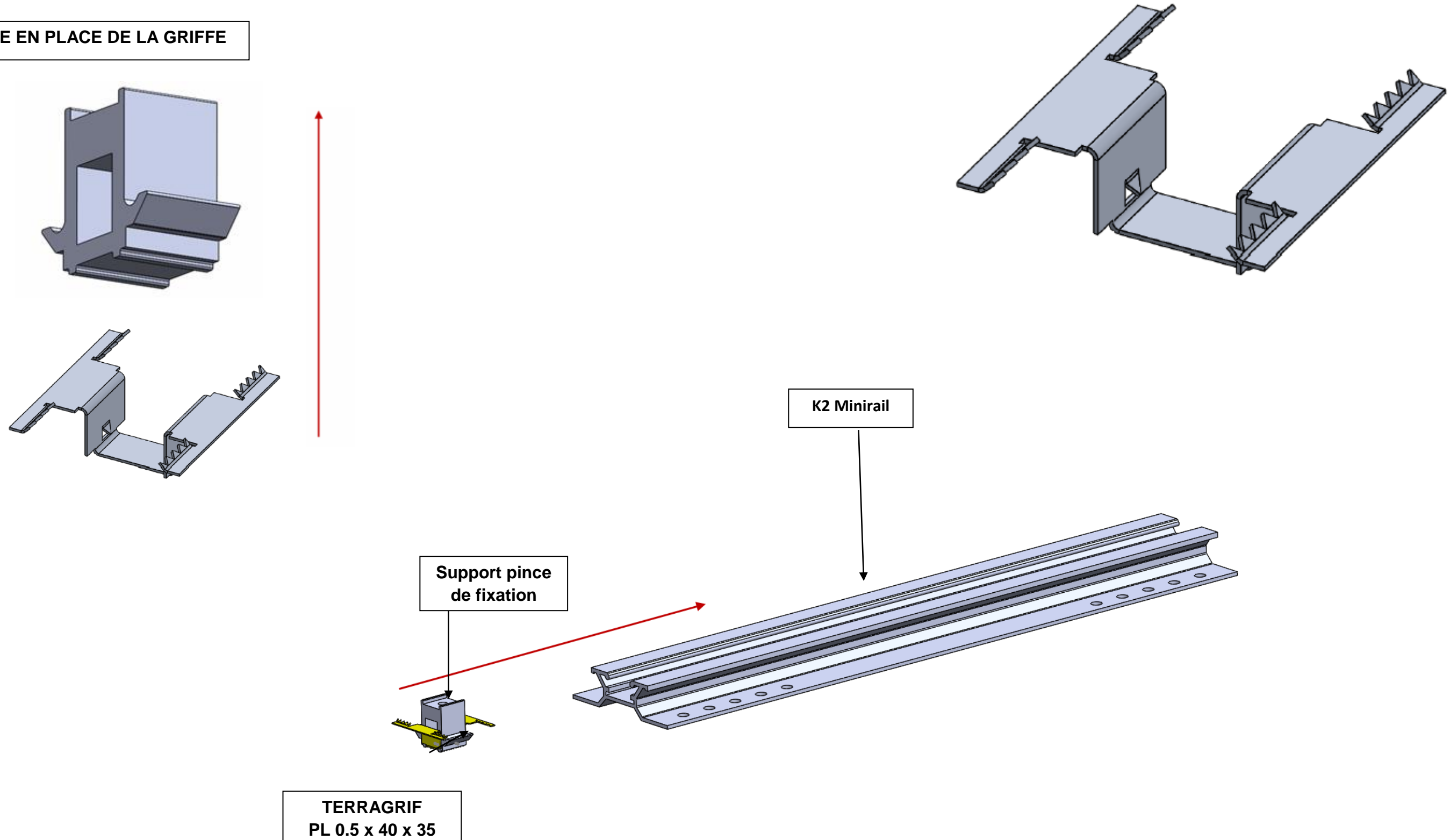


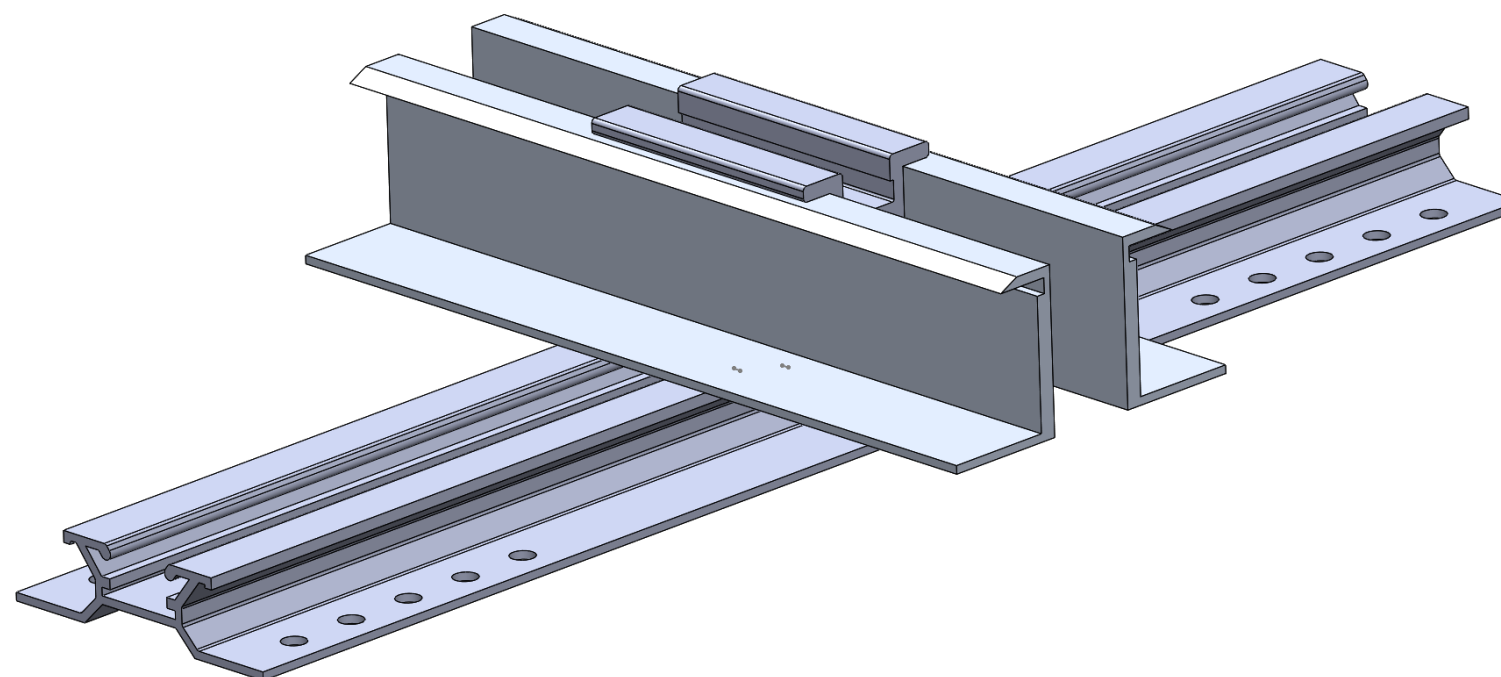
Instructions de montage – Terragrif™ PL 0.5 X 40 X 35

Système de montage K2 MINIRAIL / D-Dome V, PORTRAIT ET PAYSAGE

MISE EN PLACE DE LA GRIFFE

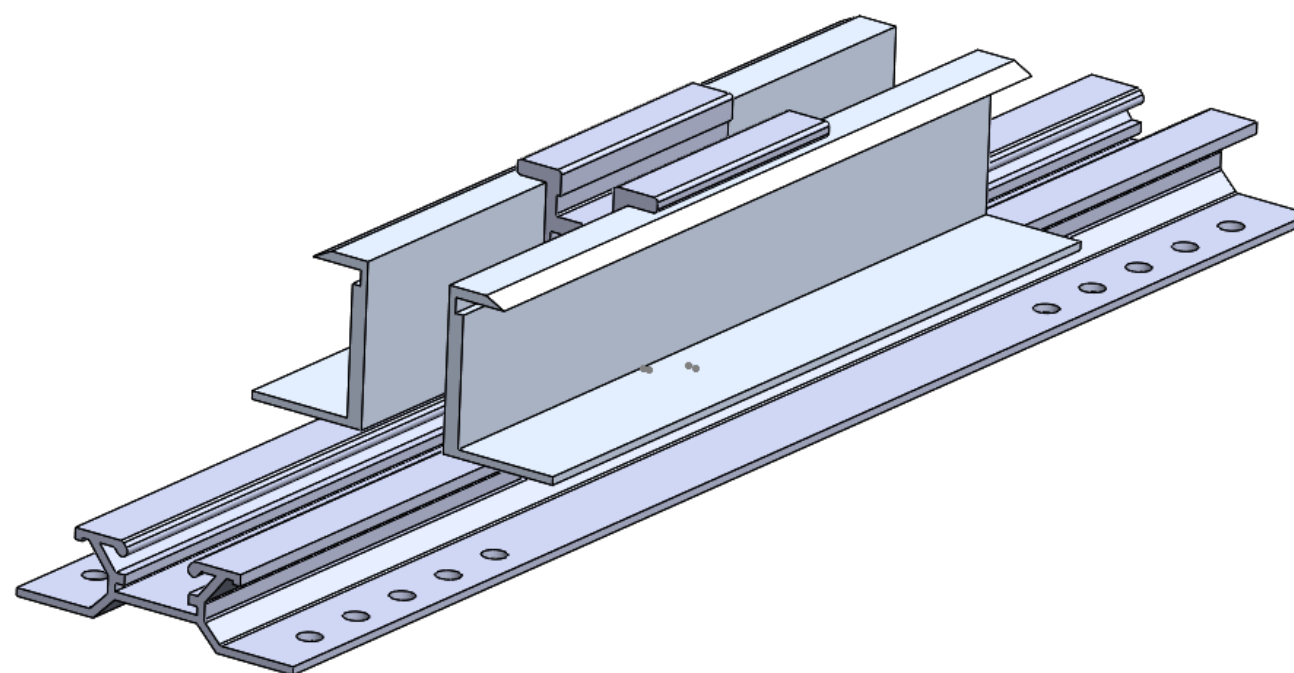


Montage en position portrait



Couple de serrage : 8 Nm

Montage en position paysage



Couple de serrage : 8 Nm